

Tissue closure of the latest generation

SERALOC®

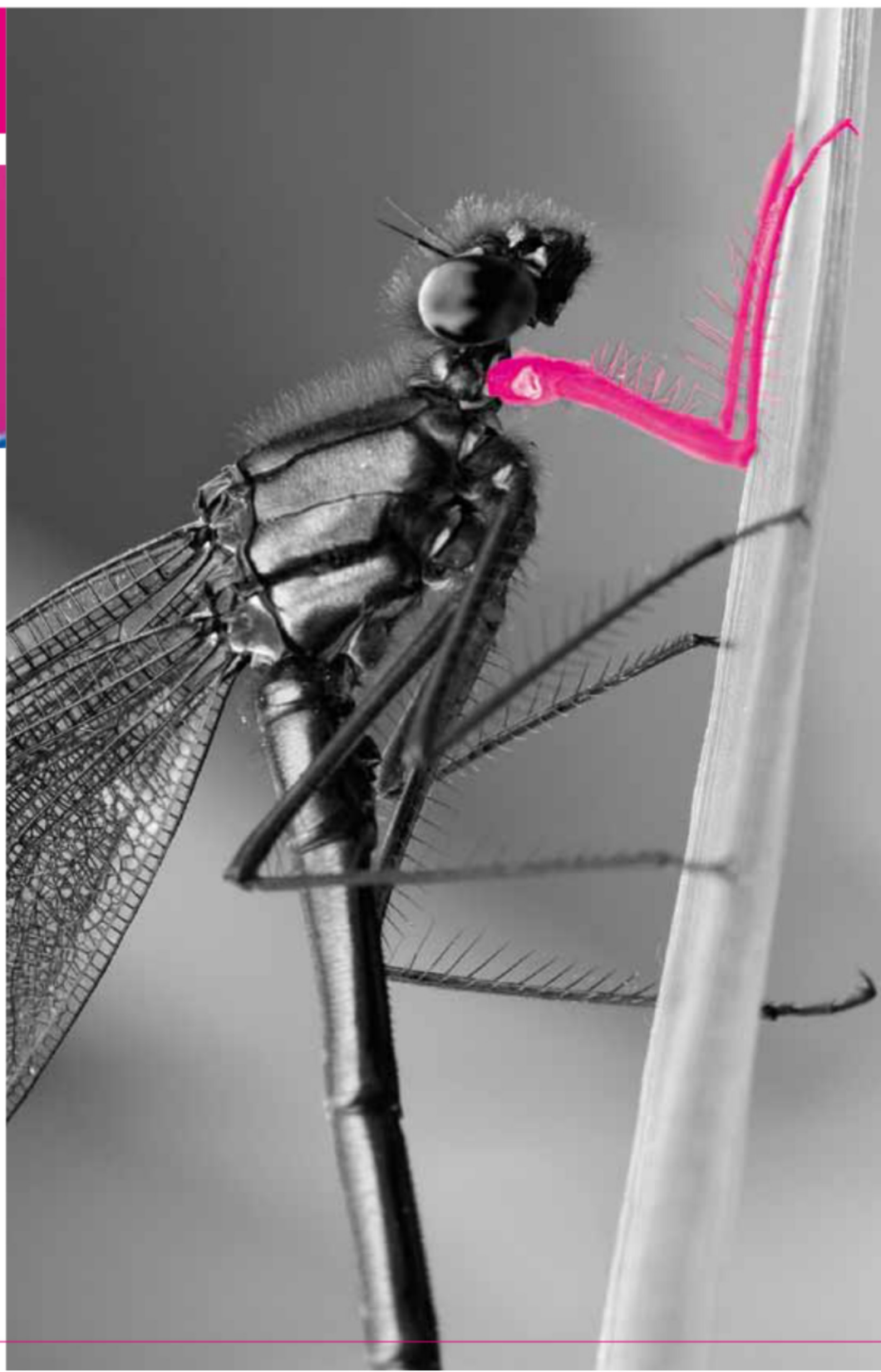
Surgical sutures



Precise

Sophisticated

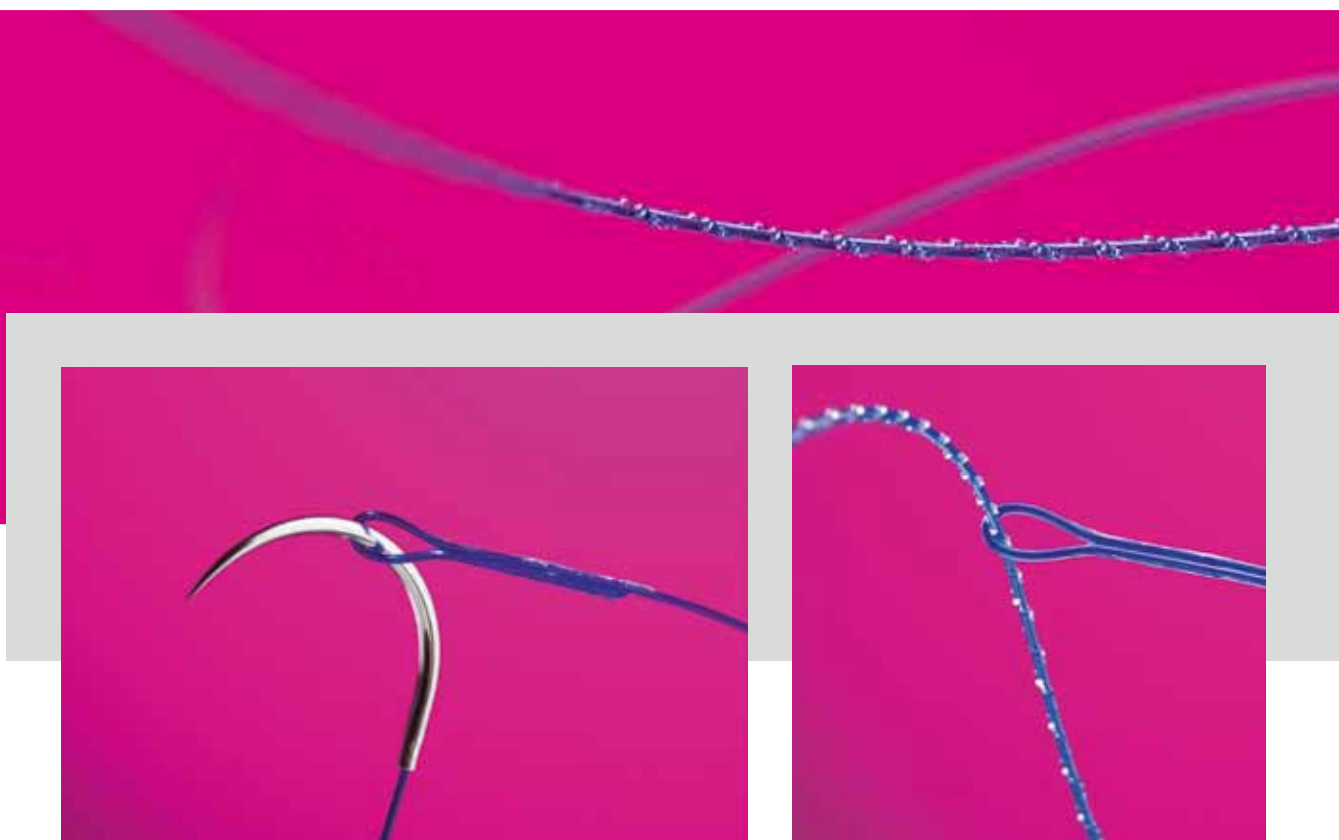
Safe



150
YEARS
1866 - 2016



SERAG
WIESSNER



Visibly different

Loop size optimally adapted for easy needle insertion

Thread with mono-directional barbs

Optimal thread length for laparoscopic use

Easy handling in confined spaces

Minimal memory effect

Tiny details - great results

More and more demands are being made on surgical suture materials. First and foremost are precision and safety in handling, as well as the best possible tolerability for the patients.

SERALOC® is a new suture technique that meets all these requirements, through small and even tiny changes in the thread. With great results.

Up until now, it was essential to secure the suture with a preliminary knot. SERALOC® makes this step superfluous. The end of the suture is welded into a stable loop. At first glance, this is only a small modification, however, it saves the surgeon time and eliminates the need for an extra hand. A further decisive advantage lies in the minute detail: the thread is equipped with unidirectional barbs at regular intervals.

Inspired by nature, these delicate points of resistance increase efficacy and safety. Tension is evenly distributed over the whole suture, thereby achieving increased closure safety

Indications

Laparoscopy

Plastic surgery

Urogynaecology

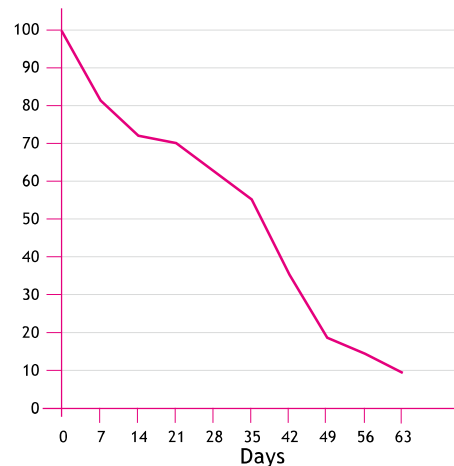


SERASYNTH® LOC

SERALOC® will initially be offered in combination with the tried-and-trusted suture material SERASYNTH®, as SERASYNTH® LOC.

SERASYNTH® is a monofilament polydioxanone thread with a half-life of 28 - 42 days and complete absorption after 180 - 210 days.

Residual tear resistance in %



Absorption profile of SERASYNTH® violet EP 2, USP 3/0

Tangibly better

No change in surgical technique

Saves time

No need for an extra hand

Less material required

More evenly distributed tension, more easily controlled


Prevents knot complications


Further material and presentations are now in development.

150
YEARS
1866 - 2016





SERAG-WIESSNER GmbH & Co. KG
Zum Kugelfang 8 - 12
95119 Naila/Germany


 + 49 9282 937-0


 + 49 9282 937-9369

Export Department:

 + 49 9282 937-230

 + 49 9282 937-9785

 info@serag-wiessner.de

 www.serag-wiessner.de